



Fleet Manager B2B

Tracking tools for connected glasses

September 2021



Summary

1. Reminder of how glasses work
2. Goals of the Dashboard
3. General introduction
 - Dashboard
 - User Page
 - Alerts Configuration Page
4. Contact





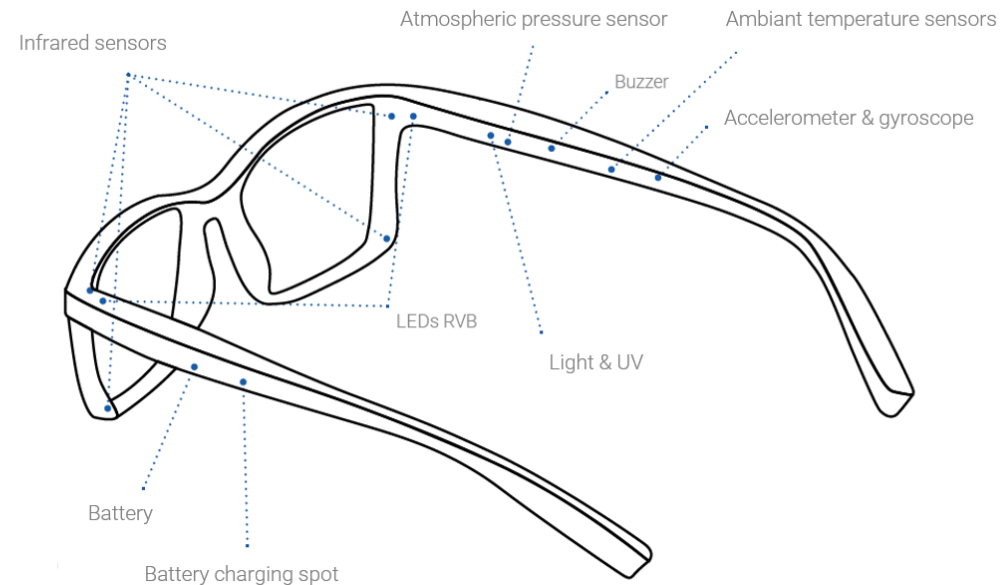
1. Reminder of how glasses work

Ellicie Healthy **Connected Eyewear** is designed to **keep drivers safe!**

Equipped with about 15 sensors, the smart glasses continuously collect and measure physical, physiological and environmental variables to help prevent the risk of falling asleep at the wheel..

In the event of detection of the first signs of falling asleep, **the driver is alerted by an audible and luminous signal** from the glasses.

The glasses are associated with the mobile application Driver by Ellicie Healthy, which also allows the driver to receive a **notification** on his smartphone, as well as the contacts that the driver will have previously saved from the application.





2. Goals of the dashboard

The information collected by the connected glasses is displayed on a management interface, which allows the Fleet Manager to **follow the data with a global view on his group, or by user.**

The information is delivered **in real time, or over a set period of time.**

The tool allows you to :

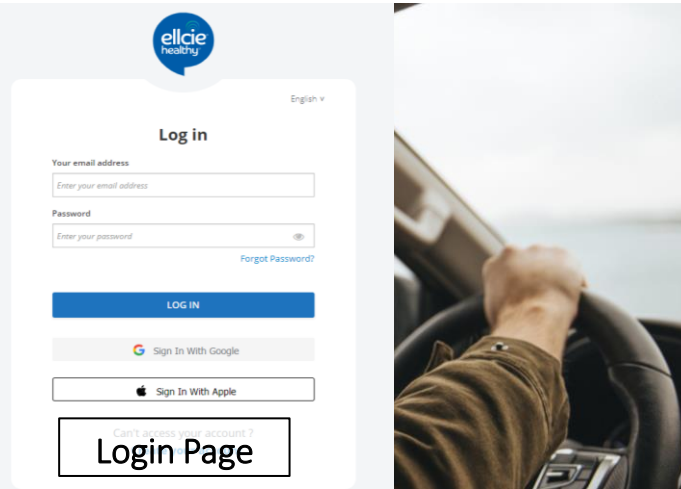
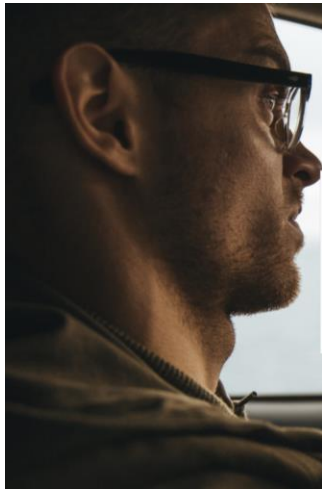
- Globally consult **the main indicators** of the users of its group
- Stay informed **in detail on all the trips by user, with visualization on a map**
- Configure the reception of **SMS and/or Email alerts** in case of level 4 or 5 of one of the users of his group.

The tool is available in French and English.

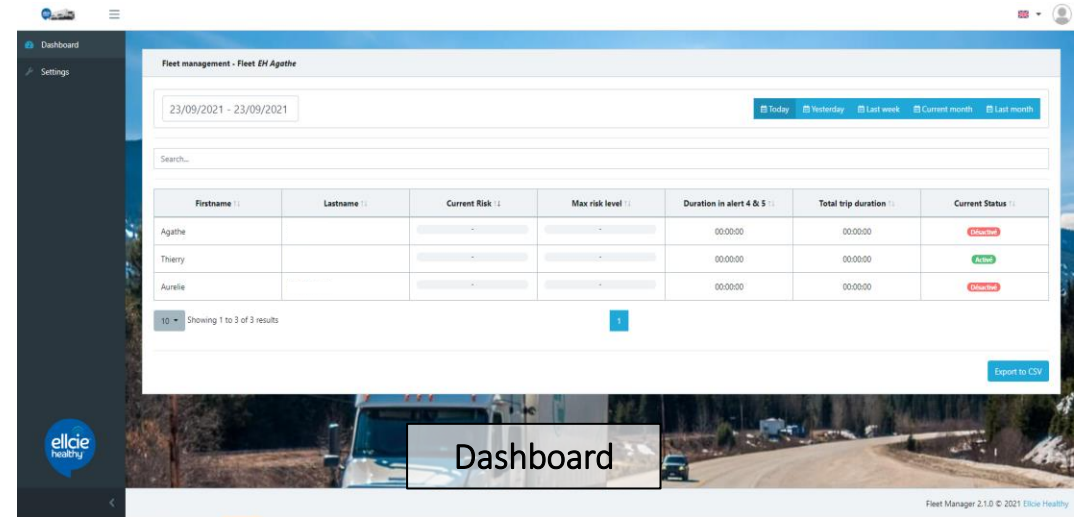
**Equip your employees and stay informed
thanks to the Fleet Manager!**



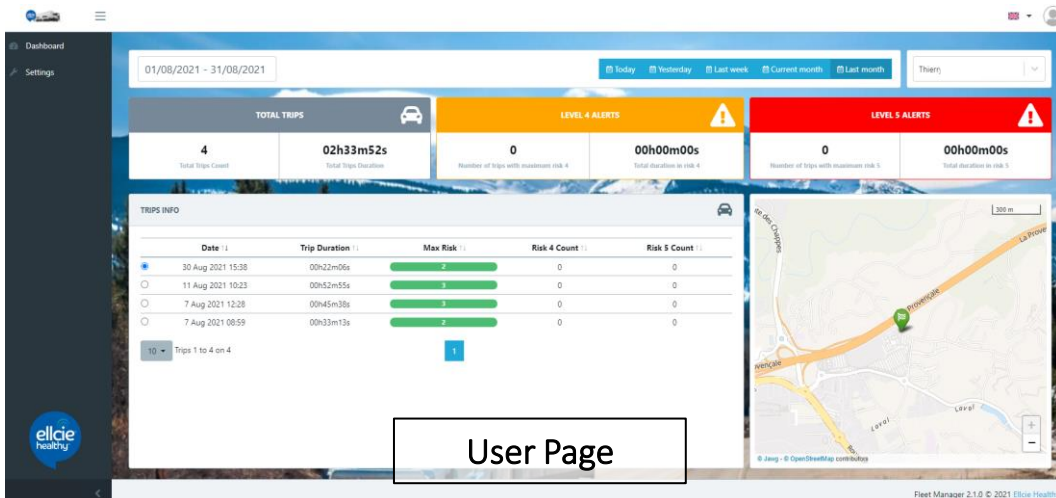
3. General Introduction



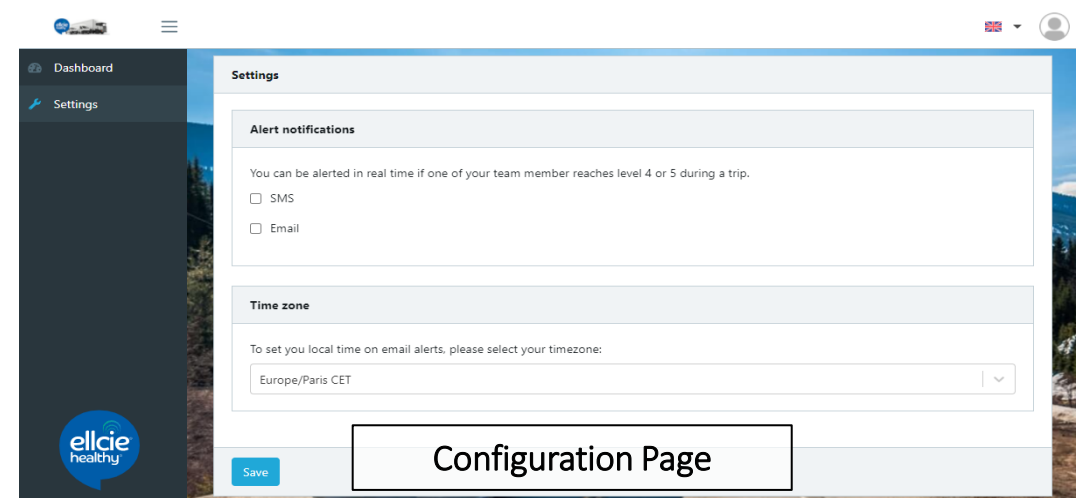
Can't access your account?
Login Page



Dashboard



User Page

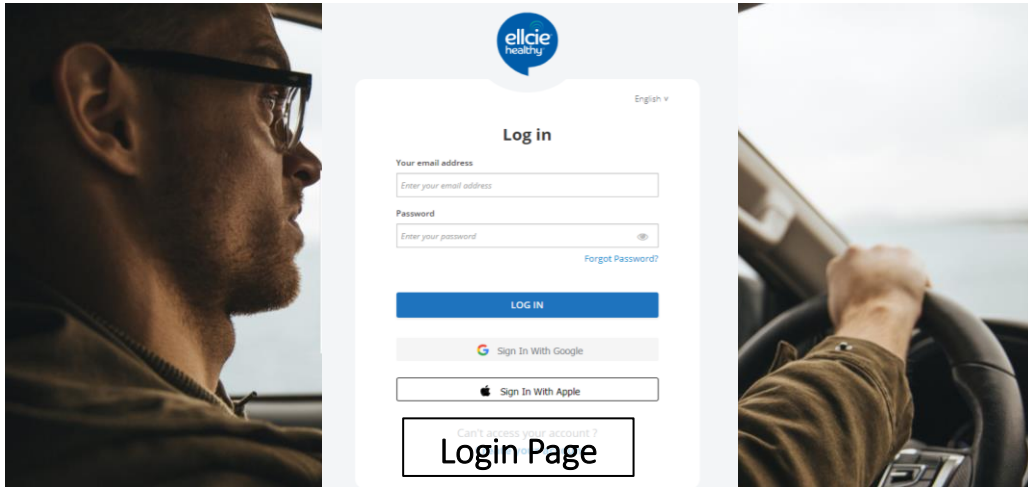


Configuration Page



3. General Introduction

Dashboard

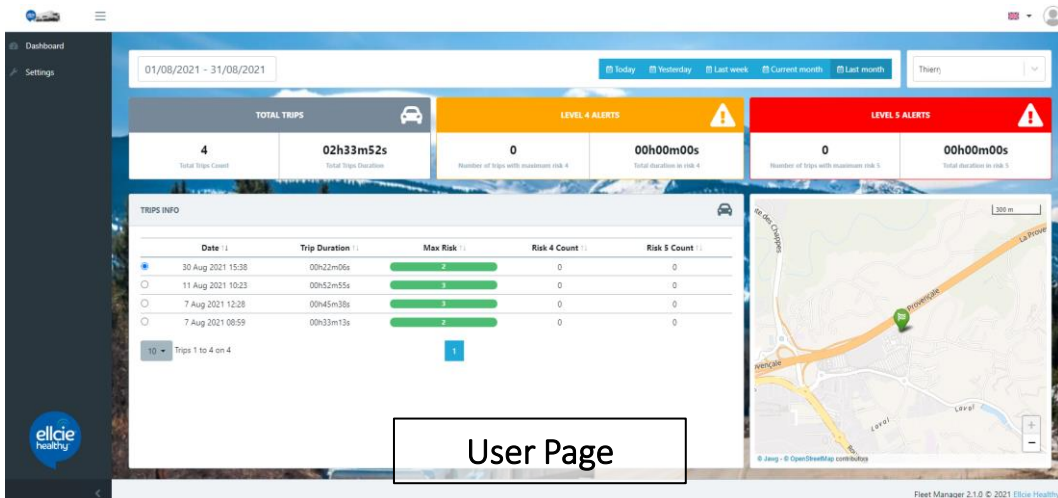


Can't access your account?
Login Page

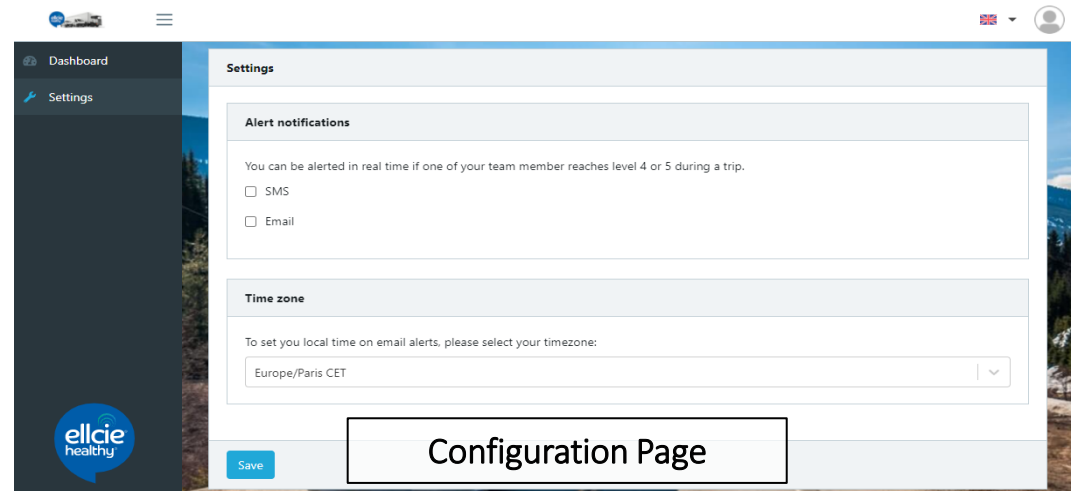
Indicators of group users :

- current level of drivers
- max level reached over the selected period of time
- cumulative times on levels 4 & 5
- cumulative travel times - current status of glasses

Dashboard



User Page

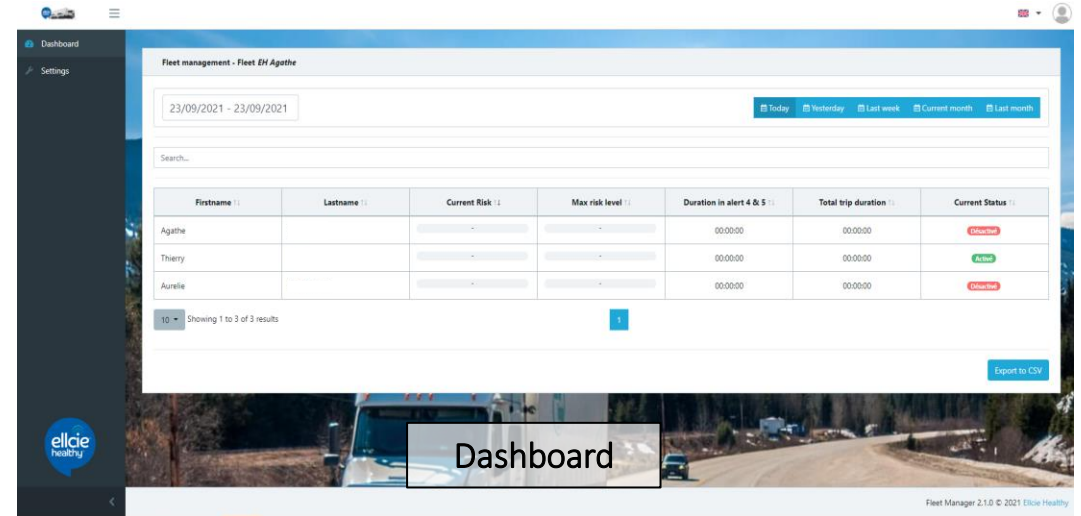
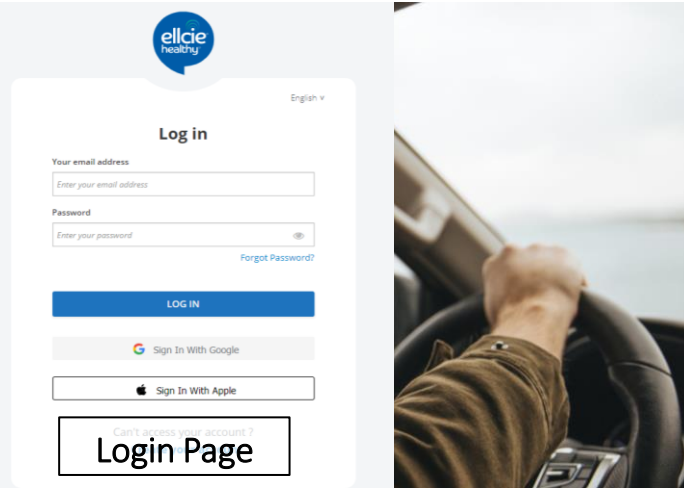
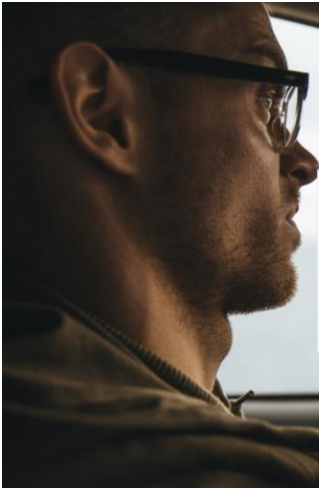


Configuration Page



3. General Introduction

User Page

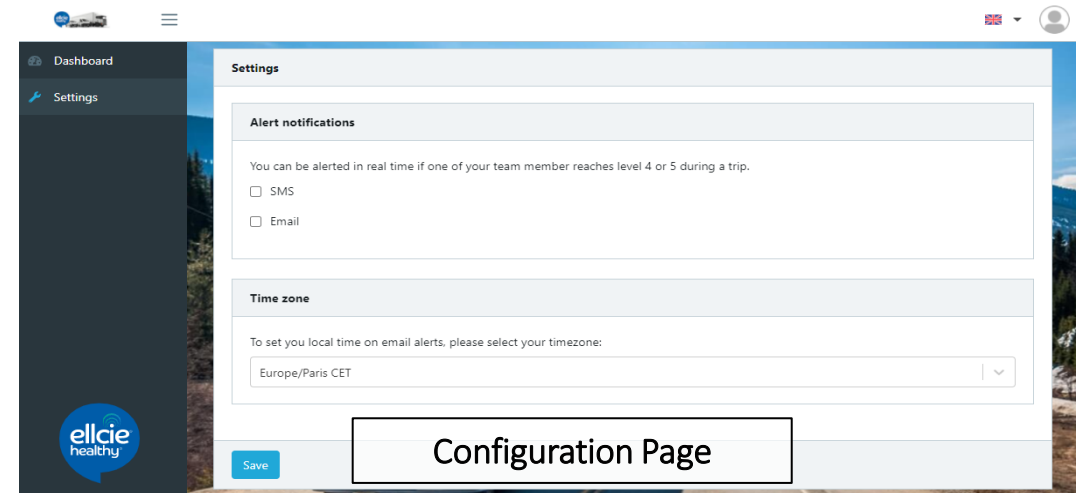


Dashboard

Trip detail per user

- the number and duration of trips made
- the number and duration of level 4 alerts received
- the number and duration of level 5 alerts received
- the details of each trip with visualization on the Map

User Page

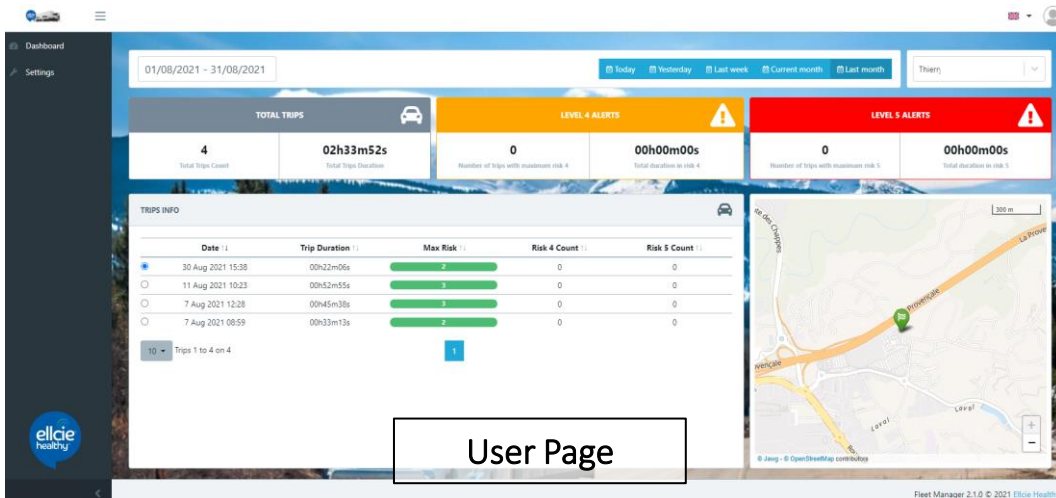
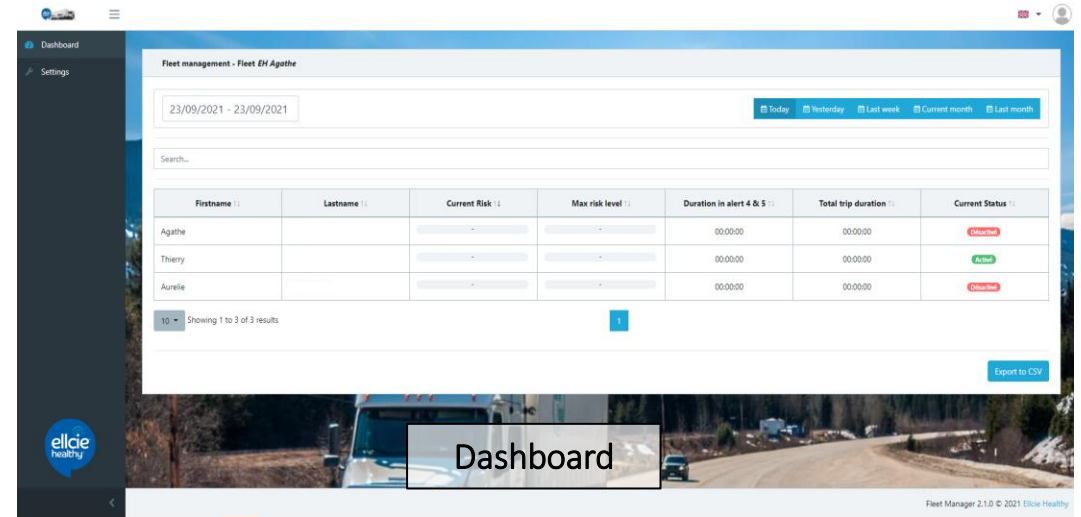
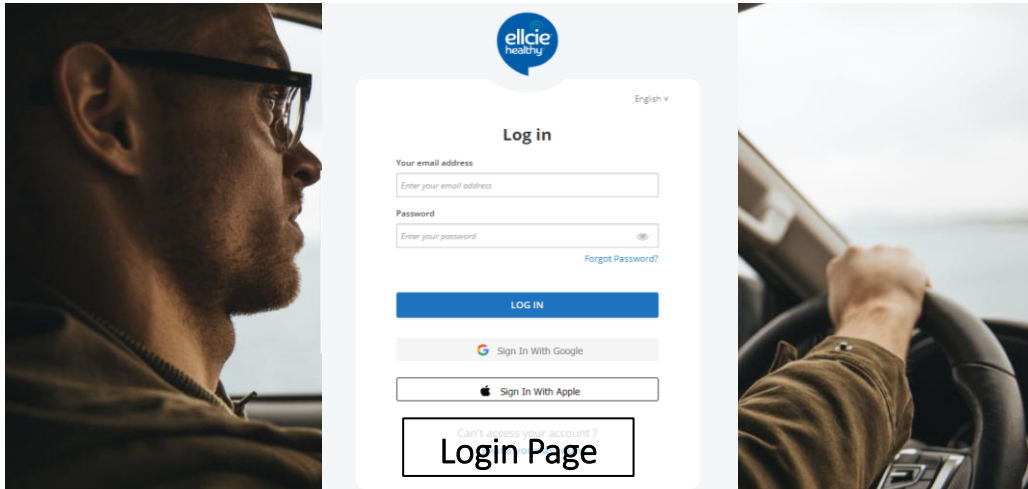


Configuration Page



3. General Introduction

Configuration Page



The Configuration menu
You can configure the type of alert (SMS and/or email) you wish to receive each time one of the users in your group reaches a critical sleep level (level 4 or 5).
You can also change your time zone so that the time indicated in the alerts corresponds to the local time.

Configuration Page



4. Contact

Thierry Muela

B2B Manager

Mail : thierry.muela@elcie-healthy.com

Mobile: 33 (0)668 654 590

Philippe Peyrard

CEO

Mail : philippe.peyrard@elcie-healthy.com

Mobile: 33 (0)678068162

Elcie Healthy

670 chemin du Valbosquet – Villa B

06600 Antibes

FRANCE

www.elcie-healthy.com